



LAS OLAS CENTRE

350-450 East Las Olas Boulevard
Fort Lauderdale, FL

LASOLASCENTRE.COM

JON BLUNK *President*
305 400 9887 | jblunk@tcrefl.com

LAUREL OSWALD *Executive Director*
305 867 3625 | loswald@tcrefl.com

CRISTINA GLARIA *Senior Vice President*
305 867 3626 | cglaria@tcrefl.com

HARRISON MISCHEL *Director*
305 935 4374 | hmischel@tcrefl.com

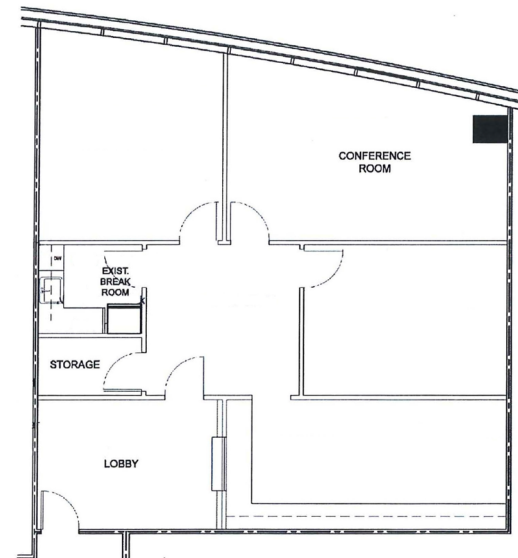
owned + managed by
BA BRADFORD ALLEN

exclusively leased by
TCRE

SUITE 1120

1,678 SF

350 BUILDING



HIGHLIGHTS

- Views of Las Olas Boulevard
- Contiguous spaces also available on this floor to provide a larger space if needed.

Las Olas Boulevard

