



# LAS OLAS CENTRE

350-450 East Las Olas Boulevard  
Fort Lauderdale, FL

[LASOLASCENTRE.COM](http://LASOLASCENTRE.COM)

**JON BLUNK** *President*  
305 400 9887 | [jblunk@tcrefl.com](mailto:jblunk@tcrefl.com)

**LAUREL OSWALD** *Executive Director*  
305 867 3625 | [loswald@tcrefl.com](mailto:loswald@tcrefl.com)

**CRISTINA GLARIA** *Senior Vice President*  
305 867 3626 | [cglaria@tcrefl.com](mailto:cglaria@tcrefl.com)

**HARRISON MISCHEL** *Director*  
305 935 4374 | [hmischel@tcrefl.com](mailto:hmischel@tcrefl.com)

owned + managed by  
**BA** BRADFORD ALLEN

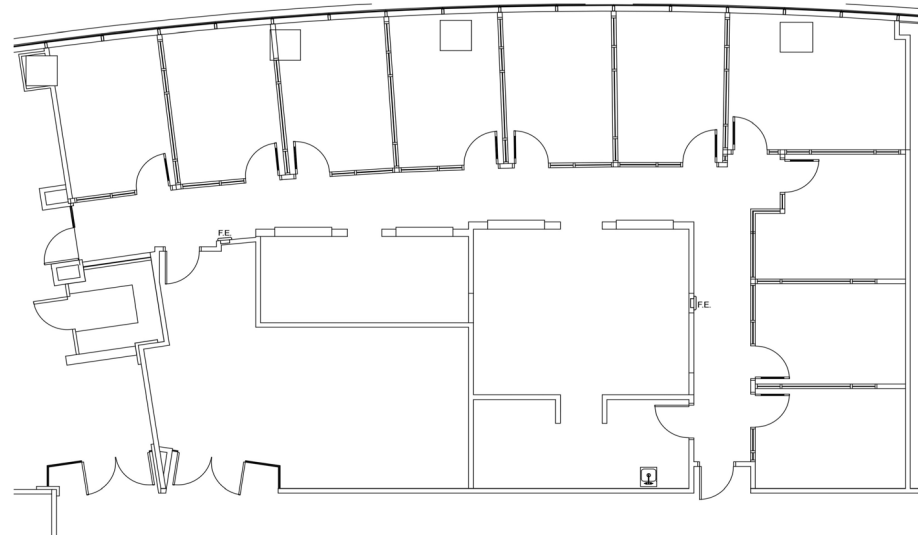
exclusively leased by  
**TCRE**

SUITE 1410

# 3,661 SF

350 BUILDING

[VIEW VIRTUAL TOUR](#)



### HIGHLIGHTS

- Prime elevator identification
- Views of Las Olas Boulevard
- Contiguous 9,508-13,801 SF of contiguous space available if needed to accommodate a larger requirement.

Las Olas Boulevard

