



LAS OLAS CENTRE

350-450 East Las Olas Boulevard
Fort Lauderdale, FL

LASOLASCENTRE.COM

JON BLUNK *President*
305 400 9887 | jblunk@tcrefl.com

LAUREL OSWALD *Executive Director*
305 867 3625 | loswald@tcrefl.com

CRISTINA GLARIA *Senior Vice President*
305 867 3626 | cglaria@tcrefl.com

HARRISON MISCHER *Director*
305 935 4374 | hmischer@tcrefl.com

owned + managed by

BA BRADFORD
ALLEN

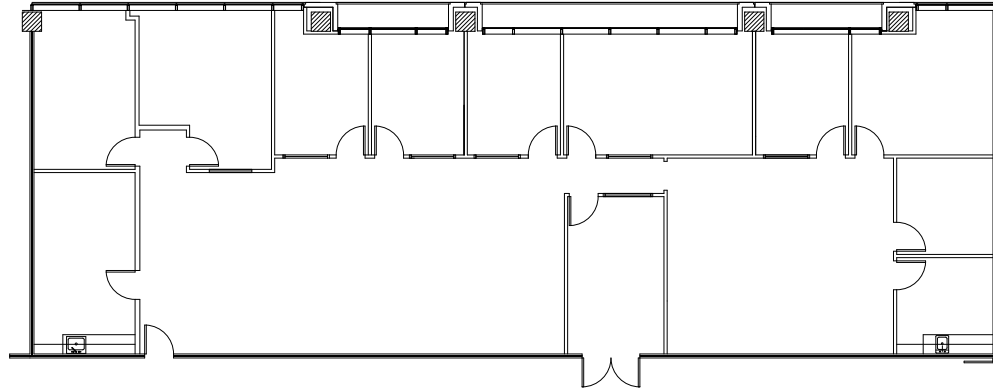
exclusively leased by

TCRE

SUITE 700-740

4,232 SF

450 BUILDING



HIGHLIGHTS

- Prime elevator identification
- Views of Las Olas Boulevard
- Contiguous 13,064 SF space available if needed to accommodate a larger requirement

Las Olas Boulevard

